









a step ahead...

Construction Product Catalog



Product List

-  Tile Adhesives
-  Tile Grouts
-  Block Fix Adhesive
-  Wall Putty
-  Ready to plaster
-  Waterproofing Chemicals

The majority of high-rise builders trust Swadi products. As we offer a wide variety of products with the utmost emphasis on quality and services along with the most competitive prices.

Trusted by



Tile Adhesive Standard

Grey, Polymer modified cement base powder tile adhesive. It is grey colored and single component product with mixture of cement, sand and special additives. Suitable for fixing tiles up to 6mm thickness (can be extended up to 12mm thickness in the area of limited extent).



For both Walls & Tiles

For Ceramic Tiles,

Vitrified Tiles,

Porcelain Tiles

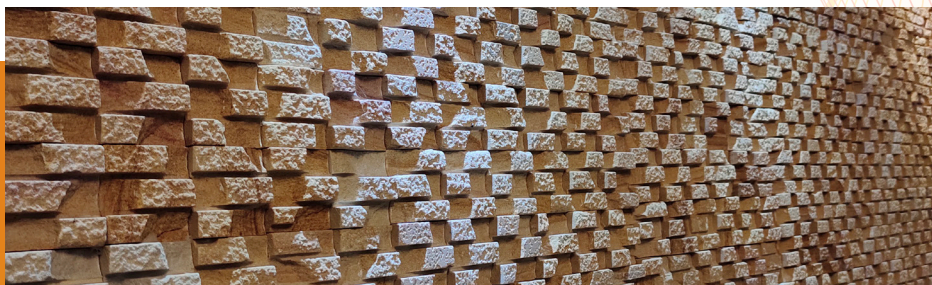
Pack Size: 30, 40 & 50 Kg Bag

Benefits:

- Easy to mix & easy to apply
- Needs no curing & soaking of tiles
- Increases productivity & soaking of tiles
- Excellent bond strength & slip resistance

Grey & White Adhesive Stone Bond

Grey & White colors is a cement-based polymer fortified thin set adhesive, designed for installing ceramic, porcelain, mosaics, vitrified tiles and natural stones on floors & walls in interiors as well as exteriors.



Benefits:

- High polymer fortified adhesive
- Easy to mix & easy to apply
- For fixing of heavy marbles & granites
- Excellent bond strength & slip resistance

Pack Size: 30, 40 & 50 Kg Bag

Mosaic Bond

SWADI MOSAIC BOND is white cement based highly polymer enriched, flexible tile adhesive specially designed for fixing fully vitrified tiles, non-porous tiles, natural stones & glass mosaics on wall in interior and exterior situations including swimming pools.



Benefits:

- High polymer fortified adhesive
- Easy to mix & easy to apply
- For fixing of heavy marbles & granites
- Excellent bond strength & slip resistance

Pack Size: 30, 40 & 50 Kg Bag

Epoxy Tile Grout (2 Part / 3 Part)

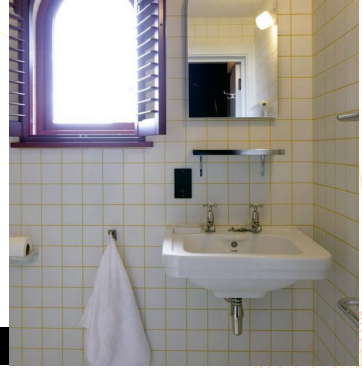
SWADI EPOXY TILE GROUT – EG07 is a high-quality, resin-based three-part & two-part epoxy grout. The Cure grout is stain-free, chemical resistant, hard-wearing, hygienic, & highly impervious. SWADI EPOXY is designed to fill joints, up to 10mm between ceramic tiles, vitrified tiles, porcelain tiles, and all types of natural & composite stones in exterior & interior situations including swimming pools. Available in more than 50 shades to match tile colors.



Pack Size: 2 Kg & 5 Kg Bucket

Cement Tile Grout

SWADI Cementitious polymer cement grout is based highly polymer enriched, water resistant joint filler, designed to fill joints between ceramic tiles, vitrified tiles, porcelain tiles and all types of natural & composite



Pack Size: 1, 5 & 10 Kg Pouch

Block Fix Adhesive

SWADI BLOCKFIX ADHESIVE BFA06 is high quality dry mortar for fixing of concrete blocks, hollow bricks, fly ash bricks, AAC blocks, soil cement block, earthen terracotta blocks. It is premix of graded sand and cemen specially designed with polymers which combine to give high strength and stability. This can be used at 3-6 mm thickness instead of conventional mortar which requires at 15-20 mm thick



Benefits:

- Economical and Easy Application
- Crack resistance and non-shrink
- Excellent Durable & Eco friendly
- Excellent Adhesion Strength
- Suitable for all types of Blocks

Pack Size: 40 Kg Bag

Wall Putty

SWADI Wall Putty is a water-resistant white cement-based putty that can be used on concrete/mortar walls (internal and external) and ceilings. SWADI putty binds strongly to the base plaster, even if the surface is damp, and forms a protective base. SWADI wall putty fills up the fine pores in the walls and ceiling and provides a white, smooth, and dry surface, essential for painting. SWADI wall putty offers you total protection against flaking; you are assured of a good-looking home for years to come.



Pack Size: 30 & 40 Kg Bag

Benefits:

- Excellent efflorescence resistance
- Smooth and uniform with excellent finish on rough surface
- Excellent resistance to water
- Good adhesion and tensile strength
- Highly durable & suitable for all types of paints

Ready to plast

SWADI READY TO PLAST is a high-quality premix plaster suitable for concrete blocks, bricks, concrete blocks, concrete hollow blocks, lightweight blocks, and fly ash bricks. Designed with polymers, it is the perfect blend of graded sand and cement for high strength and stability. The Ready-to-Plaster render is suitable for external, internal, and ceiling rendering. It is quick to apply, smooth to the touch, and consistently high in quality.



Benefits:

- Economical and Easy Application
- Crack resistance and non-shrink
- Excellent Durable & Eco friendly
- Excellent Adhesion Strength
- Suitable for all types of Blocks

Pack Size: 40 Kg Bag

TruBond 50

TRUBOND SBR is a modified styrene-butadiene rubber emulsion, which substantially increases the quality & performance of cement slurries & mortars. It offers high durability, reduced shrinkage, and increased flexibility & bond strength. It is also used in conjunction with Portland cement for waterproof slurries or tight render basecoat

Benefits:

- Simple to use - Single component, gauged as required.
- High flexural / tensile strength to control cracking
- Compatible with all common hydraulic cements
- Reduces the rate of aggressive chemical attack
- Long life and watertight masonry jointing Makes renders waterproof and gives durability & flexibility



Pack Size: 1, 5 & 20 Litre

TruBond 1K

SWADI TruBond 1K is a ready-to-use waterproofing membrane specifically designed for underlayment for tile, bathroom, kitchen, balcony & terrace underlays. TruBond 1K is based on the most advanced styrene-butadiene copolymer technology and is totally resistant to re-emulsification once cured. Provides long-lasting protection against moisture & dampness to the structure by creating a flexible & durable film on the underlayment.



Pack Size: 20 Kg Bucket

Benefits:

- Simple to use - Single component, gauged as required.
- Once cured, Re-emulsification won't happen
- The Best designed for underlayment for all areas.
- Ensures long-term moisture protection and durability

TruBond 2K

TruBond 2k is a two-component cementitious coating, composed of high-quality cement, properly selected & graded fillers, additives, and acrylic polymer. It is suitable for achieving waterproofing for roofs, because it provides strong bonding, good waterproofing and excellent resistant to hydrostatic water pressure by forming highly elastic seamless coating over the applied concrete surfaces.



Pack Size: 20 Kg Pack

Benefits:

- Simple to use - Double component, Mix the given quantity & use.
- Higher abrasion resistance, good adhesion to building materials similar thermal characteristics to concrete
- High flexural / tensile strength to control cracking
- Resists extreme hydro-static pressure
- Easy to apply & cost-effective

Roof Bond

The RoofBond coating is a water-based compound composed of specialty polymers. Roof Bond is a white pigmented compound, designed to be used as a liquid-applied waterproofing membrane for outdoor applications, especially on building roofs. Dried films exhibit a low water absorbency and superior water repellency, as well as excellent weather resistance for exterior applications



Benefits:

- 1.) Highly Weather Resistant
- 2.) 100% UV Resistant
- 3.) Strong bond strength

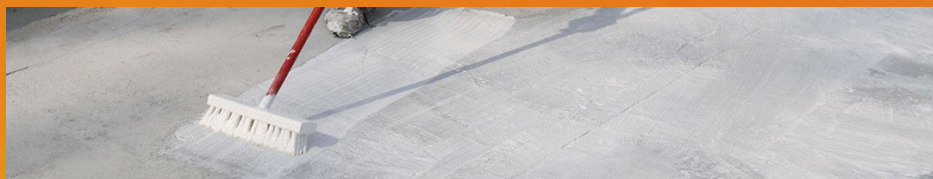
Pack Size: 20 Kg Bucket

TruBond PU

TruBond PU is a single-component, liquid applied, elastomeric polyurethane coating for waterproofing of concrete and masonry surfaces. TruBond PU provides excellent resistance to moisture, water, and salts penetration into concrete and masonry surfaces. Conforms to the requirements of ASTM C836-3

Benefits:

1. Liquid applied membrane, can be applied with roller, brush or spray
2. Non-toxic, Provides a seamless coating
3. Flexible, has crack bridging ability
4. High bond strength to a variety of substrates and building materials
5. Resists positive water pressure
6. Excellent resistance to Chlorides and Alkalies



Pack Size: 20 Kg Bucket

AquaSecure 120

AquaSecure 120 is a unique chemical treatment for the waterproofing, protection and repair of concrete. AquaSecure consists of Portland cement, finely graded sand and active proprietary chemicals; it is applied as a cementitious slurry to the pre-saturated surface of existing above and below grade concrete structures. AquaSecure 120 is also mixed in a Dry-Pac form for sealing strips at construction joints, or for the repairing of leaking cracks, faulty construction joints and other defects.



Pack Size: 1, 5 & 25 Kg Bag

Benefits:

- Simple to use - Single component, gauged as required.
- Higher abrasion resistance,
- High flexural strength to control cracking
- Excellent Bonding for crack filling



SWADI MINERALS AND CHEMICALS

Bellary Branch Office

9/64, Weavers Street, Bellary - 583
101, Karnataka, INDIA

Corporate Office & Mfr. Unit

Sy.no 70/1, Gollarahatti,
Vishwaneedam Post,
Near Shahi Export Unit No 8,
Bengaluru, Karnataka, 560091

Kurnool Branch Office

D.No.81/169-1-1, Vivek Nagar,
Opp. Sub Register Office,
Kurnool - 518 002, A.P. INDIA

Customer Care: 8884492928

Email: enquiry@swadigroup.co.in | swadigroup.co.in



Flooring Product Catalogue



Flooring Products

Cementitious self leveling
Epoxy Flooring
Poly-urethane flooring

ESD Flooring
Anti-Skid Epoxy Flooring
Floor Densification

Cementitious Self Levelling

A Swadi original and best Cementitious Self-leveller

Self-levelling underlayment is polymer-modified cement that has superior flow characteristics, which flows with gravity to level uneven & rough surfaces. Seela Super 999 provides an ultrasmooth and seamless finish to the floor.

The Super 999 powder is a single component ready-to-use product, requiring a mix of water as per the powder: water ratio. As a result of the mixed viscosity, the product remains a homogeneous and a perfect integrational mix.

Variety of products

Seel Super 999

Original & Basic Self-Leveling Compound

Seela Ultra 899

A Stronger design for heavy traffic areas

Benefits

- For smoothing and resurfacing paths, drive ways, parking areas, courtyards,etc.
- Self-levelling & self-setting cement
- High strength & durable floor
- Within 48 hours, the floors are ready to receive floor coverings.
- Advanced shrinkage control for precise thickness



Epoxy Flooring

A Swadi original True Colour Epoxy Floorings

Evo Shine® Epoxy Flooring System provides a high-quality epoxy coating with super gloss, durability, colour enhancement, anti-skid, weather resistant and Excellent chemical resistance.

Evo Shine® A Swadi Epoxy Flooring System is designed in accordance with the Indian Standard code IS: 4631 – 2001. The system consists of four set of products (as listed below) that comply with the requirements of sealing substrate, building thickness and to level the uneven the surfaces, Finish coat which provides all assured properties, and beautiful concave finish for side walls (Epoxy Coving)

Benefits

- Good chemical & abrasion resistance
- Free of solvents
- High mechanical strength
- Easy & Fast application
- Durability & Seamless
- Aesthetic: Available in several colors provides as hygienic surface



Poly-Urethane Flooring

Heavy-duty polyurethane flooring system

SWADI EvoShine PU Crete is a four-component polyurethane-concrete flooring system. This flowable system is applied at a thickness of 2 – 6mm and forms a smooth surface. The thickness is determined by the service and cleaning temperatures and the severity of traffic expected.

SWADI EvoShine PU Crete is extremely tough and has many physical properties that exceed those of typical concrete. This is recommended for conditions requiring the maximum chemical resistance and where a smooth, even and easy to clean surface is required.

Benefits

- Eco-friendly
- Fast Application (Can be applied to 8-day-old concrete/10-day-old)
- Solvent free Low odour, water-based system with a high level of mechanical, chemical and water resistance.
- Excellent impact resistance at (6 mm) thickness. Can handle heavy traffics.
- Slip-resistant finish
- Non-penetrable, hygienic and attractive work space



ESD Flooring

Swadi Anti-static flooring system

Swadi ESD Flooring is a multi-layered self-levelled epoxy system, which provides you with a highly durable, customizable, sustainable & attractive work space with chosen colour.

Swadi ESD floorings are designed to control the electrical resistance of the floor by inhibiting static electricity, thus preventing damage from random static discharge.

To comply with all industrial standards, our electrical resistance measures fall within the ideal range (or) Safest electrical range which come between 1.0×10^5 to $1.0 \times 10^8 \Omega$ (ohms).

Benefits

- Provides a safest electrical resistance
- Highly durable & seamless flooring
- Excellent chemical resistance
- High mechanical strength
- Free of solvents
- Ready with a wide range of attractive colour choice



Anti-Skid Epoxy Flooring

Shark Grip | Slip Resistant | Matt Finish | Hygienic Surface | Waterproof

The Swadi Anti-Skid floor coating system provides Excellent friction, Gloss finish, Ultra durable and water resistance on flooring. Swadi Anti-skid flooring system includes a standard quality supply of epoxy resin, epoxy hardeners, and graded filler.

The System is designed in accordance with the Indian Standard code IS:4631-2001. Ultimately, the system completes in 3 steps: priming, Sanding, and finishing.

Benefits

- 100% Slip Resistant
- Ultra Durable Coating
- Water-proofed Flooring
- Modern & attractive look
- Chemically Resistant & Abrasion resistance
- Hygienic Surface



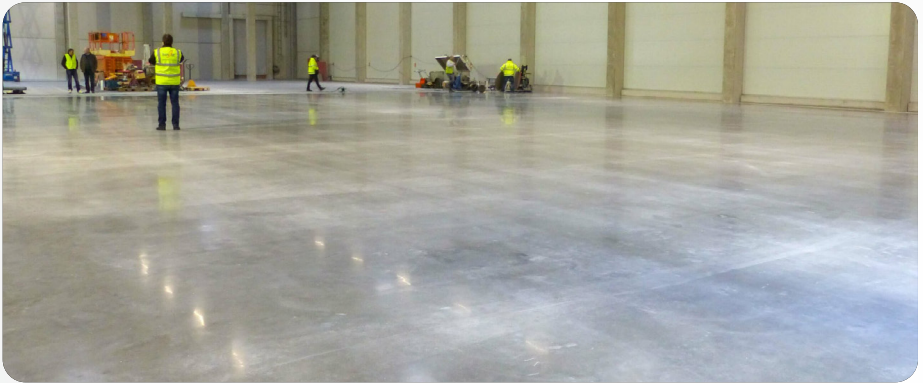
Floor Densification

GLossy Concrete Floor

Swadi Densifloor is a lithium-based floor densifier. They're mostly utilized to create floors - dust proof, Stain resistant, non-porous, glossy & durability. These densifiers are used on both polished and non-polished concrete to reduce dusting & Wear.

Benefits

- low-maintenance— polished concrete is easily maintained with the use of clean water or a neutral Ph cleaner.
- Non slippery – due to high coefficient of friction
- Dust-proof – so tight as to exclude dust
- Ambient light – highly reflective polished concrete reduces lighting needs and can improve natural lighting.
- Durability – flooring is hard bearing and will not chip or dent like softer surfaces such as organic materials





SWADI MINERALS AND CHEMICALS

Sy.no 70/1, Gollarahatti,
Vishwaneedam Post,
Near Shahi Export Unit No 8,
Bengaluru, Karnataka, 560091

BELLARY BRANCH OFFICE

9/64, Weavers Street, Bellary - 583
101, Karnataka, INDIA

KURNOOL BRANCH OFFICE

D.No.81/169-1-1, Vivek Nagar,
Opp. Sub Register Office,
Kurnool - 518 002, A.P. INDIA

Customer Care: 8884492928
Email: enquiry@swadigroup.co.in
swadigroup.co.in